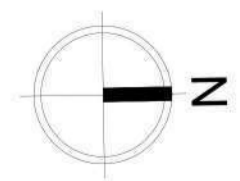


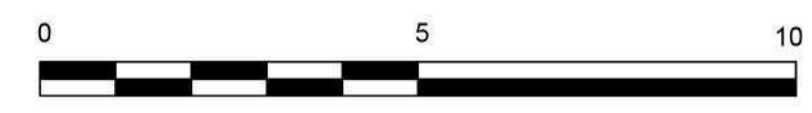
PLANT SCHEDULE				
		QTY	LOCATION	AREA TO COVER in square or linear meter
Groundcovers				
Fescue Lawn			Entrance Yard and Main Garden	99 sqm
Trachelospermum jasminoides	Starjasmine		Entrance Yard	17 sqm
Ophiopogon japonicus	Mondo Grass		Trampoline area	20 sqm
Soleirolia soleirolii	Baby Tears		Veggy garden between the stepping stones and under the citruses	19 sqm
Hedges				
Alnus jorullensis	Mexican Alder	20	Entrance Yard + Main garden + Trampoline Area	20 lm
Camellia sasanqua 'Setsugekka'		11	Entrance Yard + Steps down to Main Garden	11 lm
Laurus nobilis	Bay Laurel	8	Main garden	8 lm
Griselinia littoralis		11	Veggy garden	11 lm
Creeping plants				
Ficus pumila minima		14	Parking + Veggy garden + Path to the Veggy Garden	14 lm
Trachelospermum jasminoides	Starjasmine	18	Driveway + Main Garden	18 lm
Other plants				
Gardenia jasminoides		2	In pots under the entrance porch	
Buxus sempervirens	Boxwood	78	Entrance Yard	7sqm
Lavandula stoechas 'Bee Brilliant'	Spanish Lavender	5	Entrance Yard	3 lm
Clivia miniata		40	Subtropical planting in the Trampoline area (along the wall and in the wild subtropical planting)	3 sqm + 5 sqm
Citrus Limon	Lemon tree	2	Veggy garden	
Tahitian Lime		1	Veggy garden	
Rhopalostylis sapida	Nikau	5	Entrance Yard + Subtropical planting in the Trampoline area	
Howea forsteriana	Kentia Palm	3	Subtropical planting in the Trampoline area	
Cordyline australis	Cabbage tree	2	Subtropical planting in the Trampoline area	
Cyathea medullaris	Black Ponga	2	Subtropical planting in the Trampoline area	
Lepidozamia peroffskyana		2	Subtropical planting in the Trampoline area	
Asplenium bulbiferum	Hen and Chicken Fern	6	Subtropical planting in the Trampoline area	
Blechnum discolor	Crown fern	9	Subtropical planting in the Trampoline area	
Muehlenbeckia axillaris		15	Subtropical planting in the Trampoline area	

The Camellia on the front and the Lavender in the small stripe at the back of the lawn provide blooming in different seasons

A group of Nikaus echoed on the other side of the path characterised the Entrance Yard. A smooth Starjasmine is the consistent groundcover of the two gardens, slightly sliding from the parking to the lawn and connecting the different levels



These drawings have been accurately prepared and scaled, however as the information may have been derived from a range of sources, a site check is recommended for verification before commencing works.



SCALE 1:100@A2